

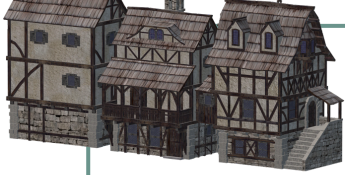


# Curiosity Challenge

Year 1 - HT5



## Why did the Great Fire happen in London a long time ago?



### Can you become a Tudor building expert?



Find out what Tudor buildings looked like. What materials were they made from?

What shapes and patterns can you spot in their design?

You could look around your local area to see if you can find any Tudor-style buildings, or use Kiddle to help you research.

Be ready to share what you discover!



### Can you build your own Tudor house?

Using what you have learned about Tudor buildings, design and make your own Tudor-style house to bring into school.

Think carefully about:

- The materials Tudor houses were made from (like wood and wattle and daub)
- The black and white patterns
- The shape of the roof and windows

You can use any materials you like (cardboard boxes, paper, sticks, recycled materials, etc.)—be as creative as you can!



*Important: Some houses will be safely used in a special end-of-term reenactment, so please make sure your model is sturdy and something you are happy for us to use in this activity.*

Be ready to explain how your house shows Tudor features when you bring it in!

