



Dear Parents, Carers & Families,



TEAMWORK



CURIOSITY



RESPECT



PRIDE



KINDNESS

Welcome back to a brand-new term and a brand-new year – 2026! We have lots to look forward to this term, with a range of exciting celebration days planned, including Safer Internet Day, Number Day, World Book Day, our Talking Café, and much more.

It has already been an AMAZING first week back, with all year groups enthusiastically launching their learning through their Big Bang Days – do take a look at the next page to see what they have been up to.

We are also delighted to welcome new members of staff to our school community: Mrs Hamed, our new SENDCo, and Miss Billings, our Wellbeing Coach. In addition, we are excited to share a positive update to our recognition of pupils, with the launch of Milkshake Friday. Children who are selected for a Golden Tree Award for demonstrating one of our school values will be invited to enjoy a celebratory milkshake with a member of the Senior Leadership Team – Miss Ingrams, Mrs Holdsworth, or Mrs Hamed.

This year is also the Year of Reading and Mrs Webber and Mrs Holdsworth have planned some exciting opportunities which we look forward to sharing with you soon!

We are very much looking forward to another positive and successful term together.

Miss Ingrams and the Lime Wood Primary team



SIGN OF THE WEEK



Together

BIG BANG DAYS

Reception

Reception explored night and day through Owl Babies and came dressed as nocturnal and diurnal animals.



Year 1

The Naughty Bus struck overnight, launching Y1's topic How did people travel long ago? with an exciting investigation day.



Year 2

Year 2 had an incredible Big Bang Day with Time Capsule, becoming dragon hunters to launch their new topic.



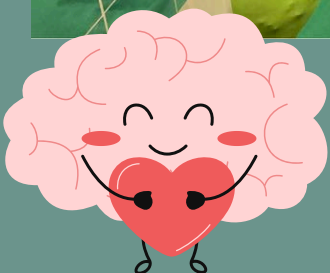
LAUNCHING TREEHOUSE OUR WELLBEING SPACE WITH MISS BILLINGS



Your **PTFA** has supported the school by donating funds raised by you, our community, to equip our new space that allows children to access a dedicated wellbeing space throughout the day.



We look forward to sharing more updates this term!



Welcome to Miss Billings, our new Wellbeing Coach, who is based in the Treehouse room.



VALUES IN ACTION



A wonderful week back with fabulous **TEAMWORK** during Big Bang Days!



LUNCHTIME AWARD

Adam M, Roxana, Almeja, Jeriah, Maxwell, David M.



STAR OF THE WEEK

Leo, Imaan, Avrora, Teo, Chidera, Dionte, Kiyan, Jessica, Maxwell, Gabriel, Harvey, Summer, Thasvanth

GOLDEN TREE

Forest, Zaigham, Elsie, Arthur(YR), Sahil, Eva, Harper, Jacob M, Aleena, Zahra, Poppy, Edward, Albert



BIRTHDAYS

Jacob M, Hope

Miss Whitaker



KEY DATES



2026 is the Year of Reading

12th January- 9am-Parent Workshop in conjunction with NatWest: Financial Foundation changes and choices

15th January- Census Day

16th January- 9am Y1 Parent Workshop - Taking the Phonics Screening Check with Mrs Webber

9:30am Y2 Parent Workshop - Taking the Phonics Screening Check with Mrs Webber

16th January- Open Day session for prospective families 26-27 - 2pm

SAFEGUARDING

Safeguarding at the Heart of Our School

The safety and wellbeing of our children is always our highest priority. Safeguarding is everyone's responsibility, and at school we work hard to ensure that all pupils feel safe, supported, and able to talk to a trusted adult if they ever feel worried or unsure.

All staff receive regular safeguarding training and are vigilant in recognising any concerns. Our safeguarding procedures are reviewed frequently to ensure they remain effective and in line with current guidance. We also teach children how to keep themselves safe through our curriculum, including lessons on online safety, healthy relationships, and how to seek help when they need it.

We would like to remind parents and carers that if you ever have a concern about a child's safety or wellbeing, please speak to a member of staff as soon as possible.

By working together, we can ensure our school remains a safe, caring, and nurturing environment for all children.



ATTENDANCE

W/c 5.01.26

We strive for 96%+ attendance for all our children

Hundred Acre Wood
94%

Neverwood Forest
87%

Angling Spring Wood
96%

Flaming Forest
89%

Faraway Tree
90%
Baobab Tree
96%

Tiny Seed
91%

Whole school, Year to date: 94%



Please speak to us if we can help with any attendance matters. We are here to help.

COMMUNITY - CHILDREN'S CHAMPIONS



Kindness and Friendship Poster Competition

The Lime Wood Children's Champions invite you to take part in their 'Kindness and Friendship' poster competition. You must design a poster (paper or digital) that shows how we can be kind and be a good friend at Lime Wood Primary School. There is space provided on the other side of this paper.

Your poster could include:

- Kind words or messages
- Pictures of children being kind or friendly
- Bright colours to help your message stand out

We ask for a donation of £1 to enter, which will go towards prizes.

Please hand in your poster or digital poster to your class Children's Champions representative and your donation to your class teacher by Friday 30th January.

Judging will take place in the following week, with winners announced in Celebration Assembly and shared on our school social media.

The winning entrees will be displayed in classrooms and around the school. Good luck!

- Name: _____
- Year and Class Name: _____



TEAMWORK



CURIOSITY



RESPECT



PRIDE



KINDNESS

KINDNESS



Volunteers
needed



Our PTFA needs YOU!

We are very lucky here at Lime Wood Primary to have an active PTFA, who organise many events to raise money for our school. If you would like to get involved or find out more, please do get in touch!

ptfalwp@gmail.com



Don't miss out...Keep up to date with all our latest news!

Follow us 



[lime_wood_primary](https://www.instagram.com/lime_wood_primary)



[Lime Wood Primary School](https://www.facebook.com/LimeWoodPrimarySchool)



www.limewoodprimaryschool.co.uk



Lime Wood
Primary School

Proud to be part of



Woodland
Academy Trust