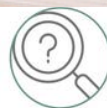




Dear Parents, Carers & Families,



TEAMWORK



CURIOSITY



RESPECT



PRIDE



KINDNESS

It has been a delight to see our Reception children venture out on their very first school trip this week, posting their letters to Santa after enjoying our core text *The Jolly Postman*. Their excitement and curiosity were wonderful to witness.

We are equally proud of our Year 1 pupils, who embarked on their first trip of the year to Frank's Park. The visit provided a fantastic extension to their topic work this term, and the children represented the school beautifully.

A heartfelt thank-you to the parents and carers who accompanied the trips—your time, enthusiasm, and support are truly appreciated.

We were also pleased to welcome SEND Lead Case Officers from Bexley, who visited our Tiny Seed special resource provision. They recognised the strong progress our children are making and the high-quality provision in place, which was a proud moment for the whole team.

We look forward to welcoming children and families to tomorrow's PTFA event, Breakfast with Santa. We are sure it will be a magical Christmas experience, and we extend our warm thanks to the PTFA team for organising this special event and for their ongoing support of our school.

Finally, thank you to all children and families for your support in collecting sponsorship money for Ready Steady Read, as well as to those who have entered the 'Be Bright Be Seen' competition run by the Children's Champions. We look forward to sharing the results very soon.

Wishing everyone a great weekend!

Miss Ingrams and the Lime Wood Primary team.



SIGN OF THE WEEK



Makaton Advent Calendar

Next week we will be sharing our very own Makaton advent calendar on a daily basis via our social media channels. Children will be shown a sign each day to learn. Have a practice at home!

OUR FIRST SCHOOL TRIP RECEPTION



Reception have been reading The Jolly Postman this week and were delighted to post their letters to Santa!

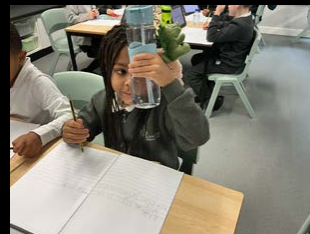
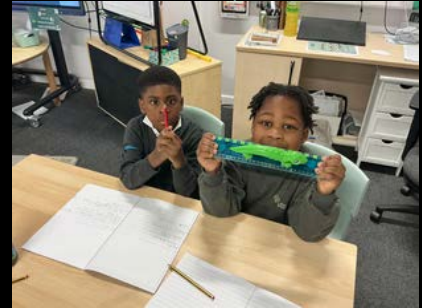


Thank you to all the parent/carers that supported us!



Year 1 have been having fun investigating and describing the different properties of materials.

Year 1



Year 2 have been investigating different materials and whether they can bend or twist. They then recorded their results in a table.

Year 2



SUBJECT LEADER SPOTLIGHT



🖨️ Introducing Miss Whitaker, our **Science** Subject Leader

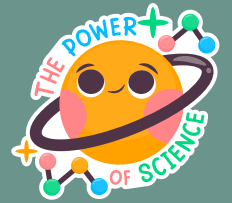
This week we're delighted to shine a spotlight on Miss Whitaker, our Science Subject Leader here at Lime Wood Primary School. Miss Whitaker is passionate about nurturing **curiosity**, encouraging children to ask big questions, and helping them understand the amazing world around them through high-quality science teaching.

Vision for Science at Lime Wood

Under Miss Whitaker's leadership, our Science curriculum is designed to ensure that every child develops both **substantive knowledge** (the key facts, concepts and understanding within biology, chemistry and physics) and **disciplinary knowledge** (the ways scientists work – investigating, observing, predicting, and drawing conclusions).

This approach supports our wider school aim of giving children the skills, knowledge and character to understand and contribute to the world they live in.

How Science is taught across the school



- Builds knowledge progressively from Early Years through to Year 6.
- Encourages children to engage in hands-on investigations and practical enquiry.
- Makes strong links to real-life contexts and the local environment, so learners can see science in action.
- Ensures all children have the opportunity to achieve and feel like scientists in the classroom.

A message from Miss Whitaker

Miss Whitaker is particularly excited about the learning taking place this term and looks forward to seeing the children's confidence grow as they test ideas, challenge assumptions and communicate their findings.

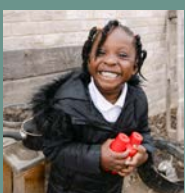
How you can get involved

We'd love for you to take a moment to explore our curriculum page on the school website and understand the progression of knowledge in Science. From there, you might consider asking your child:

- What investigation or experiment are they doing in class?
- What question are they trying to answer?
- What have they found out so far, and what might they test next?
- How does this link to the real world (our community, environment, everyday objects)?

By engaging in those discussions you help reinforce the disciplinary knowledge (how scientists think) and substantiate the factual knowledge (what they're learning).

Find out more on our website: [Our Curriculum → Science](#).



VALUES IN ACTION



Well done Reception & Y1 for the fantastic **TEAMWORK** shown on your school trips!



LUNCHTIME AWARD

Gurbanni, Rayna, Sahil,
Mysha, Ethan Je, Pearl



STAR OF THE WEEK

Leo, Emmanuel, Gaia, Arthur,
Laura, Kayden, Jacob M,
Kaiden, Isla-Mai, Jonah,
Jemi, Poppy, Sahas

GOLDEN TREE

Hope, Imaan, Ethan H, Arham,
Hezekiah, Diyasha, Jayden,
Sienna A, Zahra, Damisola,
Harvey, David, Sonny S



BIRTHDAYS

Joshua B, Maia,
Sai, Kyan



KEY DATES



29th November- Breakfast with Santa

4th December-9.15am - EYFS Parents
are invited to Christmas Arts & Crafts
with children

5th December- 9am - EYFS Parent
workshop: Making Maths Meaningful



SAFEGUARDING

If your child develops any new medical condition, it is essential that you inform the school office in writing as soon as possible. We have important procedures to follow, including updating our Medi-Alert system and our MIS system, to ensure we can fully support your child's health and safety in school.



ATTENDANCE

W/c 24.11.25

We strive for 96%+ attendance for all our children

Hundred Acre Wood 98%
Neverwood Forest 97%

Faraway Tree 96%
Baobab Tree 94%

Angling Spring Wood 99%
Flaming Forest 97%

Tiny Seed 81%

Whole school, Year to date: %



Please speak to us if we can help with any attendance matters. We are here to help.



COMMUNITY



We are delighted to announce that our kitchen was awarded a 5 star rating in their recent inspection! Well done to the kitchen team!



We are pleased that our parent workshop 'Supporting your child in KS1 Maths' is going so well! Keep an eye out for more opportunities!



London South East Children's University December 2025 Challenges

We have had a lot of new children join Children's University in the past few months, so the December challenges are a mixture of new challenges and also challenges that have popped up in previous challenges across the years! Did you know that you can do any challenge at any time of year and you can find all the challenges Louise has ever sent on our Google Drive, via: https://drive.google.com/drive/folders/114ETvYg3MN3RK9iRniHXqAm0ZSejRw?usp=drive_link

So do have a look to see if there are any you would like to do!

You can choose to complete as many of these challenges as you wish – simply email your evidence (a photo is absolutely fine!) to Louise at Bexley.CU@Bexley.gov.uk and she will send you your stamp code!

Natural Christmas decoration

For this challenge, I would like you to create a decoration for your home using natural materials, such as pine cones, leaves or twigs.

Please remember to choose your materials with care and respect!

Review a Christmas film

One of my favourite things to do at Christmas is watch Christmas movies! This challenge is to write a review on your favourite film! There is a link to a template you can download:

https://docs.google.com/document/d/1HRN4yx3z_ezUvXWD1XxveQ46wb8GntH19sZON-3ruq0/edit?usp=drive_link

ootiboo's All Star 2025 competition



ootiboo are one of our Learning Destinations and they currently have an "All Star 2025" competition, which involves creating a star-themed craft. Use any medium you like: paper, fabric, clay, recycled materials, paint, collage... the more imaginative the better!

For this challenge, we would like to make an entry and submit it by 23rd December 2025 (the closing date!). You can find out more via: <https://play.ootiboo.com/projects/all-star-competition-2025>

Pawprint's Christmas Post challenge

All of the Pawprint challenges will earn you stamps for your Children's University passport and this challenge links to their "Christmas Post" challenge! You can download the free challenge pack here:

<https://pawprintfamily.com/product/christmas-post-challenge-pack/>

Please remember that you need to complete at least 4 different activities to earn your 1hr stamp.



Massive Thank You to Miss Anderson for your generous donation of Christmas decorations for our school tree. Your kindness and thoughtfulness are truly appreciated by our whole school community.

Don't forget to register your Children's University stamps online when your child attends a 'learning destination'.



TEAMWORK



CURIOSITY



RESPECT



PRIDE



KINDNESS



Volunteers
needed



Our PTFA needs YOU!

We are very lucky here at Lime Wood Primary to have an active PTFA, who organise many events to raise money for our school. If you would like to get involved or find out more, please do get in touch!

ptfalwp@gmail.com



Don't miss out...Keep up to date with all our latest news!

Follow us 



[lime_wood_primary](https://www.instagram.com/lime_wood_primary)



[Lime Wood Primary School](https://www.facebook.com/LimeWoodPrimarySchool)



www.limewoodprimaryschool.co.uk



Lime Wood
Primary School

Proud to be part of



Woodland
Academy Trust