



TEAMWORK



CURIOSITY



RESPECT



PRIDE



KINDNESS

Dear Parents, Carers & Families,

Let me start this week's message with a huge thank you to all of the parents, families and staff who kindly donated cakes and biscuits for our cake sale in aid of Macmillan Cancer Care. We were absolutely delighted to receive such a wonderful array of scrumptious treats, and we look forward to sharing the total amount raised with you in next week's newsletter.

This week we were also pleased to welcome two representatives from St. Augustine's Primary School, who visited us to learn more about our approaches to Oracy. Miss Ingrams was delighted to show them around, and they were full of praise for our school, commenting on the calm, purposeful atmosphere in classrooms and around the site. It is always so rewarding to hear such positive feedback about our children and staff.

Finally, a thank you goes to Miss Willard for leading this morning's celebration assembly, which focused on the theme of **Maths in Nature**. The children thoroughly enjoyed the opportunity to think about how mathematical patterns and concepts can be spotted in the world around us. We would love to continue this challenge at home – so please do keep your eyes open for examples of maths in nature, and send in your photos or upload them to Showbie to share with us!

Wishing you all a restful weekend.

Miss Ingrams and the Lime Wood Primary team.



SIGN OF THE WEEK



WE LOVE LEARNING EYFS

We have been reading
The Colour Monster this week.



We weaved our
own colour
monsters -
take a look!



We used the Drawing tool on
iPads to draw our own colour
monsters!



We loved matching colours
and shapes to the colour
monsters!



TEAMWORK

RESPECT

KINDNESS

PRIDE

CURIOSITY

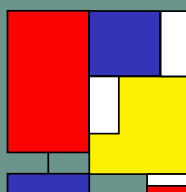


WE LOVE LEARNING

KS1

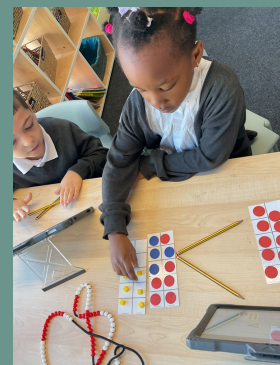
Y1

Year 1 are learning about secondary colours and the artist Piet Mondrian. They are mixing primary colours and creating bold, abstract artwork inspired by Mondrian's use of lines and colour blocks.



Y2

In maths, Year 2 have been comparing objects and numbers to 100 using the language greater/less than and equal to. They also had to use their reasoning skills and explain which quantity is greater.



TEAMWORK

RESPECT

KINDNESS

PRIDE

CURIOSITY

VALUES IN ACTION



The children have been showing great curiosity towards their learning topics this week.



LUNCHTIME AWARD

Roxana, Reggie, Matthew, Jahlarne, Wren, Olivia S,



STAR OF THE WEEK

Imaan, Michael, Oliver Z, Roxana, Hezekiah, Dione, Jahlarne, Victoria N, Oliver P, Caitlin-Rose, Pearl, Erik



GOLDEN TREE

Forest, Maeve, Teo, Avrora, Daniel, Feliz, Kaiden, Jessica, Isla-Mai, Tae, Talia, Jenifer



ATTENDANCE

W/c 22.9.25

We strive for 96%+ attendance for all our children

Hundred Acre Wood
97%
Neverwood Forest
99%

Angling Spring Wood
98%
Flaming Forest
96%

Faraway Tree
95%
Baobab Tree
96%

Whole school, Year to date: 97%



Please speak to us if we can help with any attendance matters. We are here to help.

KEY DATES



30th September - Flu Vaccination

1st October - Black History Month Begins

2nd October - Census day

6th October - Harvest Festival Assembly -

Our Harvest Festival assembly this term will be led by Rev Harris-Faulkner. We are collecting donations of non-perishable items in aid of Age UK Bexley. All donations to be handed in by 3rd October.

SAFEGUARDING - MEDICAL CONDITIONS

A reminder that it is parents/carers responsibility to inform us of your child's medical conditions.



Is your child's asthma pump in school - have you checked it is in date and noted the date of expiry?

Is your child's Epi-Pen in school - have you checked it is in date and noted the date of expiry?



If your child takes medication, please ensure that the school has a supply and your child's medical conditions are recorded so that we can ensure our First Aiders team are aware.

TEAMWORK

RESPECT

KINDNESS

PRIDE

CURIOSITY

COMMUNITY

 Lime Wood Primary School

harvest festival


Donations welcome in aid of Age UK Bexley

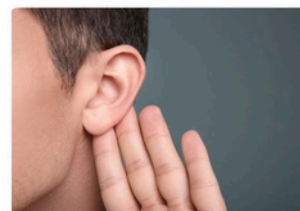
We would love donations of tinned goods to go in the community fridge for Age UK.

Drop at the gate or front office by 10th October 2025



 Bexley ageUK

 Support • Inform • Signpost • Empower



Hearing Loss

This workshop will provide information and support to Bexley parents and carers whose child may have D/deafness or hearing loss.

Our speaker, Yvette Wilson, Team Lead for Bexley Hearing Advice & Support Team, will be joining us to explain:

- The Deaf Team in Bexley; what they do and why
- Where to find more information
- The referral process
- Hearing aids
- How to support children with communication

www.bexleyvoice.org.uk

Parent Carer Workshop

Wednesday 15th October 25

10am-12noon

Danson Youth Centre
The Garden Room
Brampton Road
Bexleyheath
DA7 4EZ


Our free parent carer workshop series provides Bexley Voice members with the opportunity to get information relating to your child or young person's additional need and/or disability. We cover various topics according to parental demand.

Advance booking required at:

<https://bexleyvoice.org.uk/calendar/item/57575141574584>

or scan the QR code:



 Support • Inform • Signpost • Empower



Bexley Voice Education Workshops

- SEN (Special Educational Needs) Support
- EHC (Education, Health and Care) Needs Assessments
- EHCPs and Outcomes
- EHCP Annual Review Process

Our free education workshop series provides Bexley Voice members with the opportunity to increase their knowledge and skills regarding SEN support, EHCPs and Annual Reviews. You will access peer parent-to-parent insights, feel less isolated, increase your resilience and develop more strategies to cope and reduce stress.

Various dates and in-person and online sessions available.

Scan the QR code for dates and to find out more:



www.bexleyvoice.org.uk



Thank you to Miss Layne for your generous donation.

Meet 45 local services and organisations supporting children and young people with special educational needs and disabilities

- SEN Support and education
- Health and emotional wellbeing
- Social care and family support
- Leisure, activities and clubs



BEXLEY SEND MARKETPLACE Monday 6th October

CHANGE OF VENUE!!! NOW at...
Danson Youth and Community Centre, Brampton Road, DA7 4EZ

10am-11am — Professionals only
11am-2pm — Open to everyone
No need to book, just come along!

For more information:
Email: localoffer@bexley.gov.uk
www.bexleylocaloffer.uk

Scan the QR code for event information



TEAMWORK



CURIOSITY



RESPECT



PRIDE

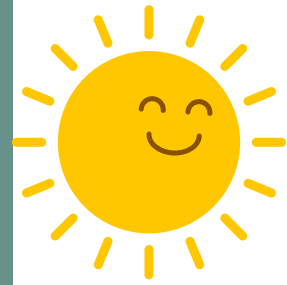


KINDNESS

PTFA



Volunteers needed



Our PTFA needs YOU!

We are very lucky here at Lime Wood Primary to have an active PTFA, who organise many events to raise money for our school. If you would like to get involved or find out more, please do get in touch!

ptfalwp@gmail.com

Meet our PTFA Members!

They are happy to answer any questions, you may have about the role of a PTFA member.

Join us!



Charly Wales
Chair LWP PTFA



Tara Harper
Member LWP PTFA



Sarah Hamilton
Secretary LWP PTFA



Natalie Buhl
Member LWP PTFA



Amanda Attard
Member LWP PTFA

Don't miss out...Keep up to date with all our latest news!

Follow us



lime_wood_primary



Lime Wood Primary School



www.limewoodprimaryschool.co.uk



Lime Wood
Primary School

Proud to be part of



Woodland
Academy Trust