



Dear Parents, Carers & Families,

This week has been a particularly busy one as children across the school have been taking part in assessments. These give us a valuable opportunity to reflect on the incredible progress they've made over the year. We are so proud of their efforts, and you'll receive more detailed information about their end-of-year assessments in their upcoming reports at the end of the term.

With the hot weather and current heat warnings, we've been taking a number of steps to keep children and staff safe and comfortable. These include using our air-conditioned spaces, shifting outdoor activities to the shaded courtyard rather than the main pitch, and giving regular reminders to drink water, refill bottles, and remove jumpers or cardigans. We've also reduced transitions within the classrooms. As the hot weather is set to continue into early next week, please do remember to send your child in with a sunhat too.

We are also excited to share the fantastic work Year 1 have been doing on their Architects project—don't forget to scroll down the newsletter to take a closer look!

Finally, I am proud to announce that we have been working with Bexley to put plans in place for the school to have a designated Special Resource Provision which will open during the Autumn term. A consultation document will be shared for your information and this can be found on our website also.

Wishing you a restful weekend, stay cool!

Miss Ingrams and the Lime Wood Primary team.



TEAMWORK



CURIOSITY



RESPECT



PRIDE



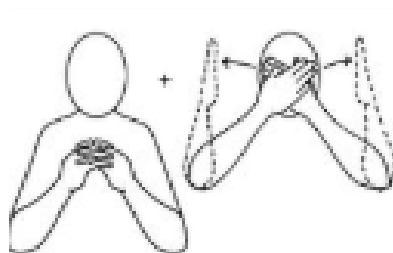
KINDNESS

This week we celebrated **National Thank a Teacher Day** in school - recognising all of the hard work and dedication shown by our school staff to secure the best outcomes and experiences for our children.

Thank you.



SIGN OF THE WEEK



WEDNESDAY

TEAMWORK

RESPECT

KINDNESS

PRIDE

CURIOSITY



WE LOVE LEARNING RECEPTION



Reception have enjoyed their
core text; Goldilocks and the Three Bears
this week!



Small world
play to re-tell
the story



Making a house
for the three bears



Playdough
bears



Making Goldilocks
and Bear Hats!



The children loved tasting
porridge just like Goldilocks!



Finding missing numbers
on the way to the three
bears house!



Writing -
WANTED
Goldilocks!



TEAMWORK

RESPECT

KINDNESS

PRIDE

CURIOSITY

WE LOVE LEARNING Y1 BECOMING ARCHITECTS

thank
you



We were delighted to have the architects of our school visit Y1 and talk to them about an exciting project they are involved with to regenerate Erith Pier. Y1 learnt about the role architects play as well as this local landmark in our community.



The children talked about what they would like to see on the pier and drew things like a zoo, houses, bridges, bandstand, ice-cream, slides and lots of gardening and greenery spaces!



The two classes came together to celebrate each other's designs and learning.

We will be placing their own version of Erith Pier on display in our school atrium soon!

TEAMWORK

RESPECT

KINDNESS

PRIDE

CURIOSITY

VALUES IN ACTION



Year 1 showed some fantastic TEAMWORK when they created an inspiring version of Erith Pier as part of their Architects Project!



LUNCHTIME AWARD

Isla-Mai, Manvvik, Harvey, Naomi



STAR OF THE WEEK

Gemm, Manvvik, Oliver L, Kairo-Israel, Erik, Rubi, Jonah, Fleur



GOLDEN TREE

Joshua N, Samayah, Mysha, Zhuri, Emmanda, Olivia, Cairo, Preston



ATTENDANCE

w/c 16.6.25

We strive for 96%+ attendance for all our children

Hundred Acre Wood
97%
Neverwood Forest
97%

Faraway Tree
98%
Baobab Tree
91%

Whole school, Year to date: 95%



Please speak to us if we can help with any attendance matters. We are here to help.

KEY DATES



23rd June - New Entrants Meetings 9am and 4pm

28th June - Summer Festival!

4th July - Transition Morning for children

SAFEGUARDING

Take a look at the NHS guidance on coping in hot weather or a heatwave.



TEAMWORK

RESPECT

KINDNESS

PRIDE

CURIOSITY



PTFA

The PTFA need more volunteers to help them with future events and supporting the work of the school so that events are able to go ahead.

Volunteers needed

Can you spare some time and help your community? Let the PTFA know by emailing them: ptfalwp@gmail.com



LIME WOOD SUMMER FESTIVAL

Join us at Lime Wood Primary School for a day of celebration, fun, games and creating memories! Here's what to anticipate:

- ✓ Live entertainment
- ✓ A variety of food & drink
- ✓ Bouncy castle
- ✓ Activity stalls & games



SUPPORTED BY LWP PTFA & PROUDLY SPONSORED BY
L&Q, ANDERSON, JACQUELINE'S GEMS, NORTHUMBERLAND HEATH FC
& ROBINSON JACKSON



SATURDAY 28TH JUNE 2025
12:00 PM – 4:00 PM

LIME WOOD PRIMARY SCHOOL, 2 SANDY ROAD, ERITH, DA8 1FJ

PTFALWP@GMAIL.COM



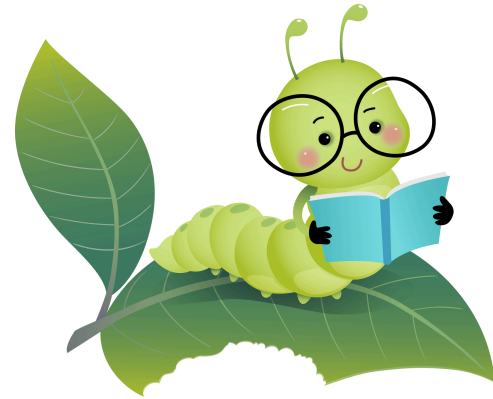
COMMUNITY

Explore the Story Garden book collection

This year's Summer Reading Challenge starts on 21 June, and we can't wait to get reading!

Full of enchanting worlds, all kinds of creatures and plants, outdoor adventures, and fascinating facts... get ready for your reading adventure with this year's book collection.

Summer Reading Challenge



Bexley SEND Marketplace Annual Event | Bexley Local Offer



Don't miss out...Keep up to date with
all our latest news!

Follow us 



lime_wood_primary



Lime Wood Primary School



www.limewoodprimaryschool.co.uk



Lime Wood
Primary School

Proud to be part of



Woodland
Academy Trust