



Dear Parents, Carers & Families,

It has been wonderful to see the school so full of energy and enthusiasm this week. Our children have settled brilliantly into their new routines, showing great independence and positivity as they embrace the year ahead. Classrooms are calm, purposeful places, and the children are already making the most of their learning opportunities.

One particular highlight has been our celebrations for **National Coding Week**. The children thoroughly enjoyed exploring the world of coding – from using simple programming tools to tackling more advanced challenges. It was inspiring to watch them problem-solve, collaborate, and discover the creative possibilities that coding offers. Their curiosity and determination were evident, and it was a joy to see them developing skills that will be so valuable for the future.

Thank you, as always, for your continued support. Together we are helping the children grow in confidence, curiosity, and resilience.



Miss Ingrams and the Lime Wood Primary team.



TEAMWORK



CURIOSITY



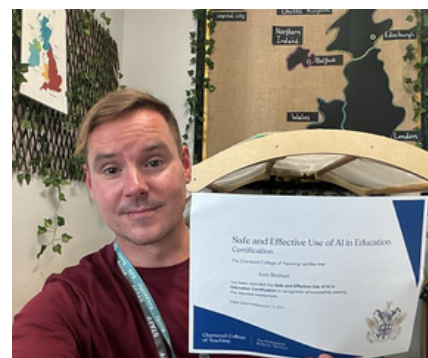
RESPECT



PRIDE

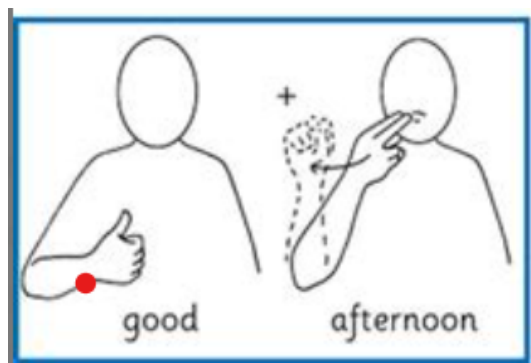


KINDNESS



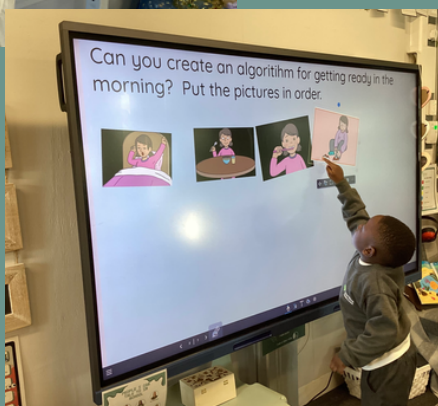
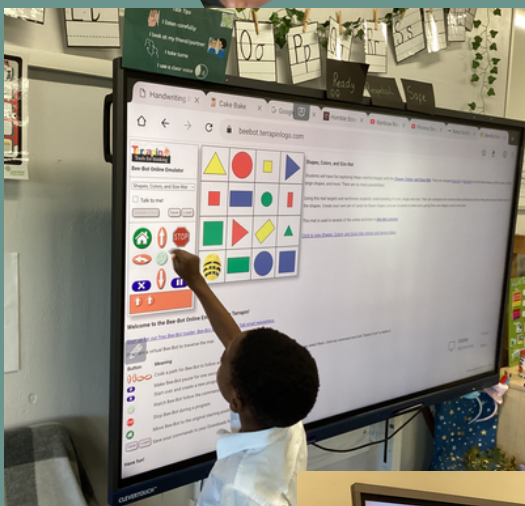
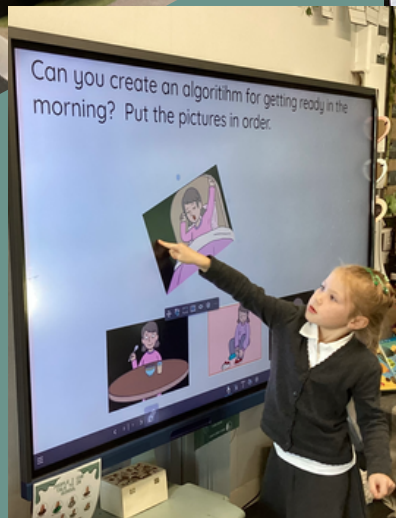
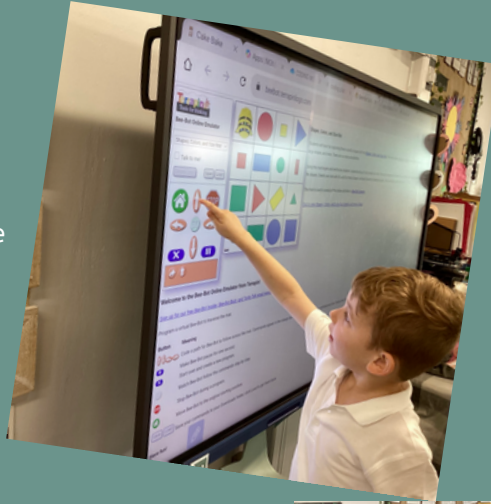
🎉 A huge well done to Mr. Benham for achieving his AI certificate! 🤖📜 He's excited to apply his new skills and knowledge to further enhance the learning experience for our students.

SIGN OF THE WEEK



WE LOVE LEARNING EYFS

As part of Coding Week EYFS children have been learning how to act like a robot and follow an algorithm. We talked about the different machines that we own that use code and how the code must be in the correct order.



TEAMWORK

RESPECT

KINDNESS

PRIDE

CURIOSITY

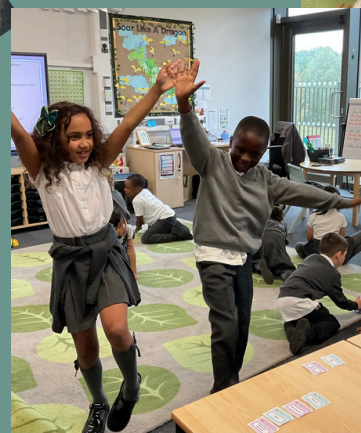
Y1

WE LOVE LEARNING
KS1

Y2

Year 1 loved using the Bee-Bots today as part of coding week. They used the app to practise how to use them and then worked in pairs to guide their Bee-Bot across the table.

Year 2 had a fantastic time during Coding Week! They created dance codes for their 'human robots' to follow, revisiting the basic coding skills they learned in Year 1. The children planned specific moves, chose which body parts their robots would use, and decided how many times each action should be repeated. They also put their coding skills to the test by building a maze and using coding cards to guide a robot mouse through it.



TEAMWORK

RESPECT

KINDNESS

PRIDE

CURIOSITY

VALUES IN ACTION



Mrs Holdsworth has been delighted with the way that children have been conducting themselves at lunchtimes!



LUNCHTIME AWARD

Hannah, Reggie, Kaira, Frankie, Preston, Harley



STAR OF THE WEEK

Ella-Rose, Maia, Kayden S, Ethan H, Kaira, Dionte, Kairo-Israel, Zhuri, Zahra, Jonah, Rubi, Mayode

GOLDEN TREE

Ralphie, Joseph, Maya, Gurbanni, Sahil, Eva, Naomi, Frankie, Xavier, Kaia, Summer, Richard



ATTENDANCE

W/c 15.9.25

We strive for 96%+ attendance for all our children

Hundred Acre Wood
98%
Neverwood Forest
99%

Angling Spring Wood
99%
Flaming Forest
96%

Faraway Tree
96%
Baobab Tree
97%

Whole school, Year to date: 97%



Please speak to us if we can help with any attendance matters. We are here to help.

KEY DATES



26th September - Cake Sale in aid of **Macmillan Cancer Care** after school - all welcome and all donations of cakes also welcome! Please hand to your child's class teacher or drop to the front office by **26th September - morning**.

30th September - Flu Vaccination

Our Harvest Festival assembly this term will be led by Rev Harris-Faulkner. We are collecting donations of non-perishable items in aid of **Bexley Food Bank**. All donations to be handed in by **3rd October**.

SAFEGUARDING - ATTENDANCE & PUNCTUALITY

At Lime Wood Primary School we strive for excellence in attendance and punctuality. You can find out more information on our school website.

We expect every child to be in school, every day and our target is for no less than 96% attendance for all.

Mrs Attard is our newly appointed **Community Liaison Officer** who will be supporting parents, carers, children and families with excellence in attendance and punctuality - she is based in the school office every morning. Mrs Attard will be responsible for contacting families when a child is absent from school each day.

If your child is not going to be in school we ask that you email LWPoffice@watschools.org.uk before school stating the reason for absence. Any planned absence such as a medical appointment should be sent with evidence of your child's appointment for our records when discussing attendance with the local authority Education Welfare Officer (EWO). We are here to help and support you with any attendance matters.

TEAMWORK

RESPECT

KINDNESS

PRIDE

CURIOSITY

COMMUNITY

Important Parking Notice for Parents & Carers



Please use the school car park which is located on Loampit Road underneath the 4G pitch.

Please avoid parking in front of garages and double yellow lines.

Support our local residents by not parking in front of their drives/garages or on yellow roads.



Support • Inform • Signpost • Empower



Bexley Voice Health Workshops

- Neurodiversity Pre-Diagnosis
- Autism Post-Diagnosis
- ADHD Post-Diagnosis

Our free health workshop series provides Bexley Voice members with the opportunity to increase their knowledge and skills relating to their child or young person's condition (pre- and post-diagnosis). You will access peer parent-to-parent insights, feel less isolated, increase your resilience and have more strategies to cope and reduce stress.

Various dates and in-person and online sessions available.

Scan the QR code for dates and to find out more:

www.bexleyvoice.org.uk



Learning & Enterprise College Bexley



Family Learning at Lime Wood Primary School

Keeping Up with My Child - English KS1
For parents with children in Years 1 & 2

Discover how children are learning to read, write, and build language skills at school, and how you can support them at home.

Starting Tuesday 30 September 2025
Times: 9:15 - 11:15 | Duration: 5 weeks
Course Code: C501-C00N1-003 / 25-01

Keeping Up with My Child - Maths KS1
For parents with children in Years 1 & 2

Find out how children explore numbers and problem solving in class, and ways you can support their learning.

Starting Tuesday 18 November 2025
Times: 9:15 - 11:15 | Duration: 5 weeks
Course Code: C501-C00N1-004 / 25-01

Supporting My Child with ASD

Discover practical ways to understand your child and support their individual strengths and needs.

Starting Tuesday 04 November 2025
Times: 13:00 - 15:00 | Duration: 5 weeks
Course Code: C501-C00N1-009 / 25-01



All courses are FREE to parents and carers.

To book your place on a course, please call our team at LECB on 020 3045 5176.

On the first day of the course, you will need to bring proof of ID (one photo ID and one proof of address) with you so that we can complete your enrolment.

t: 020 3045 5176 e: familylearning@lecb.ac.uk w: www.lecb.ac.uk



Thank You to Miss Ives for donating these bird feeders for our Nature School.

thankyou



COME & JOIN US

Lime Wood Primary School

WE INVITE YOU TO COME AND JOIN US AFTER SCHOOL IN THE MAIN HALL ON FRIDAY, 26TH SEPTEMBER.

JOIN US FOR CAKE, RAISING FUNDS IN AID OF MACMILLAN CANCER CARE.

ALL DONATIONS GRATEFULLY RECEIVED
WE HOPE YOU CAN COME!



TEAMWORK



CURIOSITY



RESPECT



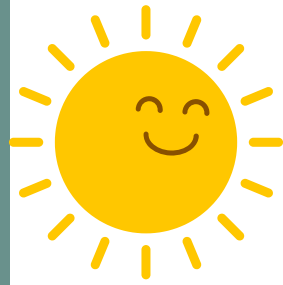
PRIDE



KINDNESS



Volunteers
needed



Our PTFA needs YOU!

We are very lucky here at Lime Wood Primary to have an active PTFA, who organise many events to raise money for our school. If you would like to get involved or find out more, please do get in touch!

ptfalwp@gmail.com

Meet our PTFA Members!

They are happy to answer any questions, you may have about the role of a PTFA member.



Join
us!



Charly Wales
Chair LWP PTFA



Tara Harper
Member LWP PTFA



Sarah Hamilton
Secretary LWP PTFA



Natalie Buhl
Member LWP PTFA



Amanda Attard
Member LWP PTFA

Don't miss out...Keep up to date with all our latest news!

Follow us 



lime_wood_primary



Lime Wood Primary School



www.limewoodprimaryschool.co.uk



Lime Wood
Primary School

Proud to be part of



Woodland
Academy Trust