



Dear Parents, Carers & Families,



TEAMWORK



CURIOSITY



RESPECT



PRIDE



KINDNESS

This week has been a particularly busy and productive one, with the children now fully settled into their new topics of learning. It has been wonderful to see their enthusiasm and engagement across the school.

We were delighted to welcome Mrs Carson, our Director of Education, for her termly visit. During her time with us, she visited each classroom, and it was a real pleasure to see how confidently and warmly the children welcomed her into their learning spaces. They spoke proudly about what they have been learning and were eager to share their knowledge and skills.

A strong focus throughout the visit was the children's oracy skills. Across the school, pupils confidently approached and engaged with Mrs Carson, articulating their ideas, explaining their learning, and reflecting on their own progress. We observed a wide range of lessons, including reading, phonics, child-initiated play in EYFS, and mathematics, all of which highlighted the children's growing confidence in spoken language.

The children are fast becoming true champions in oracy, and we are incredibly proud of the progress they continue to make.

Wishing everyone a wonderful (and hopefully, dry!) weekend.

Miss Ingrams and the Lime Wood Primary team



Well Done!

Mrs Cunningham
received her
certificate!



SIGN OF THE WEEK



Friend

OUR LEARNING THIS WEEK

Reception

Understanding the World



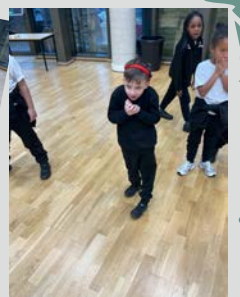
Year 1

Science



Year 2

PE - Dance





Calendar of Events

23rd January

'Read aloud' Festival

Teachers will swap classes throughout the day and share stories together.



9th February

Bedtime Story Learning Showcase

Children are invited to wear their pyjamas and donate a £1 - they will take part in bedtime story activities throughout the day. Parents are also invited in to class at 9am to join in too!



5th March

World Book Day



The whole school will be focusing on a book by Peter Reynolds called 'The Dot' - Children are invited to come to school wearing dots and they will take part in The Dot themed activities throughout the day

24th April

Treasure Hunt



Our school will be filled with clues for children to find - each clue reveals a letter coming together to reveal a phrase...

May

Reading Challenge Fundraiser

Launch 5th May
Deadline for collections 19th May



June

Reading Together

Take a photo of you and your child enjoying a book together. Send it in to be displayed in school. Send in throughout the month!

July

Story Competition
Launch 6th July
Deadline 16th July
Winners announced 17th July

Prizes to be won!



August

Summer Reading Challenge

Take part with your local library - bring in your certificates at the end of the break!

September



Take a selfie!

Where is the most unusual and imaginative place you can find to read your favourite book? Take a selfie for our photo wall! Send in throughout the month!

14th October

Stories from around the World

Parents and carers are invited to come in and read a story with our children - we would love to hear stories from different cultures



November

Book Fair

Scholastic Book Fair will be available in our school all week - matched funding will benefit our school in being able to purchase books for our library



December

Talking Cafe Readathon

Age UK Bexley and our children will come together to read Christmas stories together



More information will be shared nearer each event if required



VALUES IN ACTION



Fantastic PRIDE in our children as they spoke with our visitor this week!



LUNCHTIME AWARD

Purity, Zion, Mayode, Beatriz, Leo, Nevaeh



STAR OF THE WEEK

Naila, Maia, Samirah, Arham, Zion, Amelja, Mysha, Ruby, Sofiya, Kaia, Aslan, Rubi, Yaseen

GOLDEN TREE

Harley, Sienna, Viya, Oliver, Tae, Jahlarne, Kiyan, Hezekiah, Amanda, Rain, Ethan H, Ralphie, Mahad



BIRTHDAYS

Amelja, Darcie, Lucy, Edward



KEY DATES



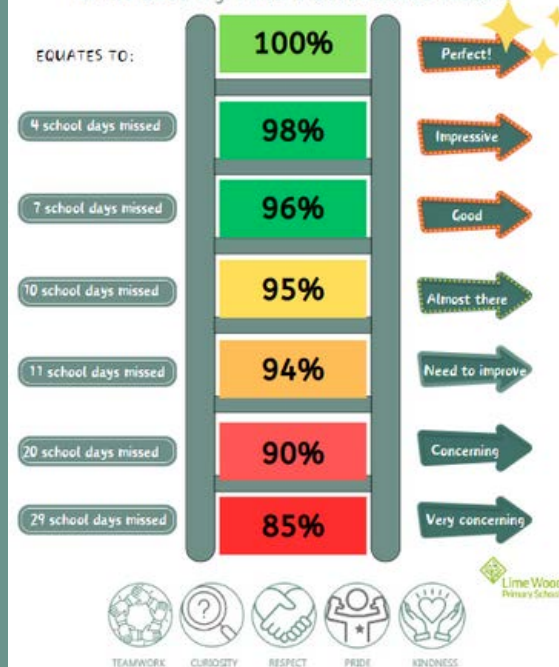
19th January - Parent Workshop in conjunction with Natwest: Frauds and Scams - 9am

21st January - Y1 Trip to Christ Church (Curriculum link - RE) - Volunteers needed!

SAFEGUARDING

Attendance Ladder

What does my child's attendance mean?



ATTENDANCE

W/c 12.01.26

We strive for 96%+ attendance for all our children

Hundred Acre Wood
94%
Neverwood Forest
95%

Faraway Tree
99%
Baobab Tree
95%

Angling Spring Wood
97%
Flaming Forest
94%

Tiny Seed
86%

Whole school, Year to date: 94%



Please speak to us if we can help with any attendance matters. We are here to help.

COMMUNITY

Financial Foundations

Fraud & Scam

9am- 19th January 2026

Lime Wood Primary School



NatWest

TOMORROW BEGINS TODAY



Support • Inform • Signpost • Empower



Dyslexia

This workshop will aim to provide information and support to parents and carers who feel their child may be dyslexic or who have received a dyslexia diagnosis.

The workshop will be delivered by Educational Psychologists from Bexley Local Authority.

The workshop will include:

- What happens in Bexley regarding diagnosis and how dyslexia can be supported in school
- Aids that can help and how you can support your child
- Local help and support
- Questions and answers

www.bexleyvoice.org.uk

Parent Carer Workshop

Wednesday 28th January 26

10am-12noon

Danson Youth Centre
The Garden Room
Brampton Road
Bexleyheath
DA7 4EZ

Our free parent carer workshop series provides Bexley Voice members with the opportunity to get information relating to your child or young person's additional need and/or disability. We cover various topics according to parental demand.

Advance booking required at:

<https://bexleyvoice.org.uk/calendar/item/57900992>

or scan the QR code:



TEAMWORK



CURIOSITY



RESPECT



PRIDE



KINDNESS

PTFA



Volunteers
needed



Our PTFA needs YOU!

We are very lucky here at Lime Wood Primary to have an active PTFA, who organise many events to raise money for our school. If you would like to get involved or find out more, please do get in touch!

ptfalwp@gmail.com

Meet our PTFA Members!

They are happy to answer any questions, you may have about the role of a PTFA member.



Charly Wales
Chair LWP PTFA



Amanda Attard
Member LWP PTFA



Liam Buhl
Treasurer LWP PTFA



Sarah Hamilton
Member LWP PTFA



Natalie Buhl
Secretary LWP PTFA



Sonal Arora
Member LWP PTFA

Don't miss out...Keep up to date with all our latest news!

Follow us 



[lime_wood_primary](https://www.instagram.com/lime_wood_primary)



[Lime Wood Primary School](https://www.facebook.com/LimeWoodPrimarySchool)



www.limewoodprimaryschool.co.uk



Lime Wood
Primary School

Proud to be part of



Woodland
Academy Trust