



Dear Parents, Carers & Families,



TEAMWORK



CURIOSITY



RESPECT



PRIDE



KINDNESS

Today, has been a fitting end to Friendship Week with Pudsey Bear paying the children a special visit. The children were amazed to see that Pudsey had time to come and see them joining in with Gladiator themed activities all in aid of Children in Need. Thank you to everyone for your donations. Can you spot Pudsey and friends throughout our newsletter?

Thank you also to the children and parents/carers that took the time to write a positive notice for each other and our school community. We are creating a Positive Noticing corridor in our school which will grow each year celebrating each other and our school.

This term, as always, is busy in the run up to the festive holidays - please take a look at page 4 for an overview.

A big thank you also goes to all of the children that participated in our Ready Steady Read competition. We hope you enjoy the book fair! We will share more information next week celebrating our fantastic readers!

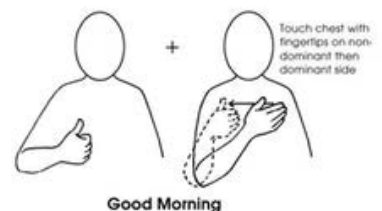
Have a wonderful weekend.

Miss Ingrams and the Lime Wood Primary team.



Sign of the Week

As a school we would like to enhance our use of Makaton for everybody. We are working on our next step plans but would like to start with making sure everyone uses Makaton to say 'Good Morning' and 'Good Afternoon' - get practising!



Good Morning



good

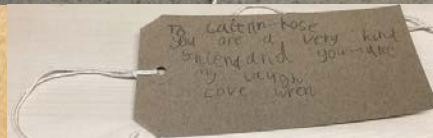


afternoon



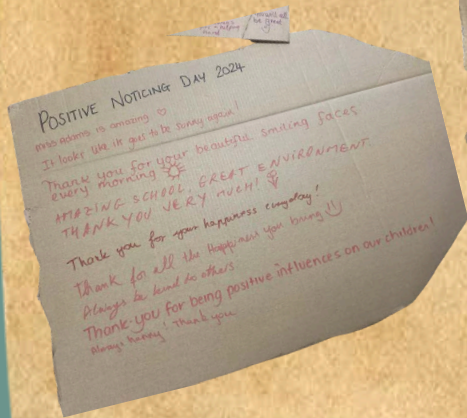
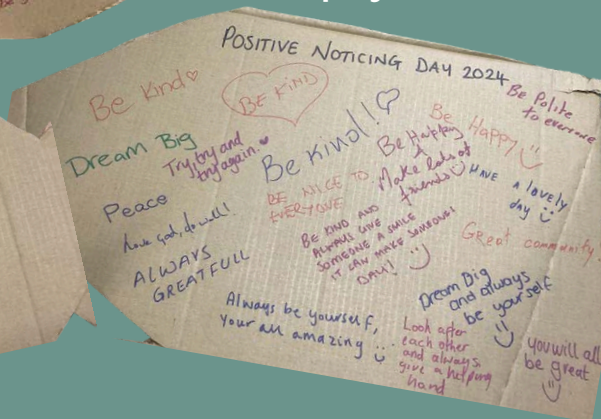
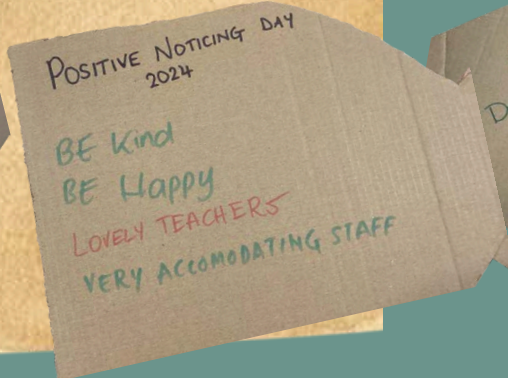
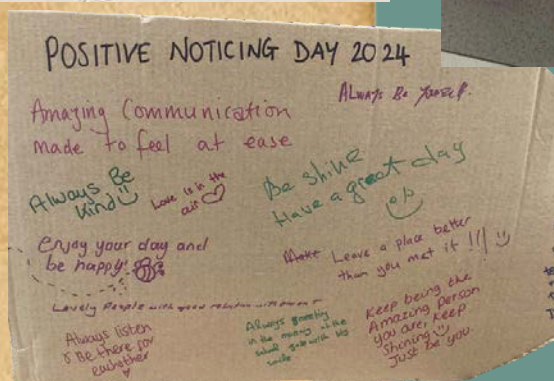
WE LOVE LEARNING

Positive Noticing Day



The children enjoyed writing their positive notices to each other throughout the day!

Thank you to everyone that added a positive notice! We will be creating a Positive Noticing Corridor to proudly display these!



TEAMWORK

RESPECT

KINDNESS

PRIDE

CURIOSITY

WE LOVE LEARNING

Children in Need



The children were so excited to meet Pudsey Bear who paid us a special visit!



Thank you Asda and Kuia, their Community Champion for telling Pudsey to come and see us!



The children enjoyed taking part in their Gladiator challenges!

TEAMWORK

RESPECT

KINDNESS

PRIDE

CURIOSITY

CHRISTMAS EVENTS

Christmas Lunch & Reindeer Dash in aid of Age UK



On 12th December 2024, all of the children and staff will enjoy Christmas Dinner together. We are also inviting everyone to come to school dressed as Reindeers as we will be taking part in a Reindeer Dash in the afternoon raising funds for Age UK. We invite families to bring a suggested donation of £1 to be given to Age UK who have supported our school since we opened and we hope to continue working in collaboration with.

Reception

Christmas Crafts

28th November 9am - Parents invited



Nativity

10th December 9.30am (Parents Only) & 11th December 2.15pm (Younger siblings welcome). Two adult tickets per child, per performance.



Christmas Tree Festival

13th December - Parent Volunteers needed - look out for a letter to sign up.

Year 1

Family Learning Showcase

16th December 2.30pm - Parents are invited to come and share learning with their children.



Christmas Songs around the Tree

19th December 2pm - Two tickets per child.



TEAMWORK

RESPECT

KINDNESS

PRIDE

CURIOSITY



VALUES IN ACTION



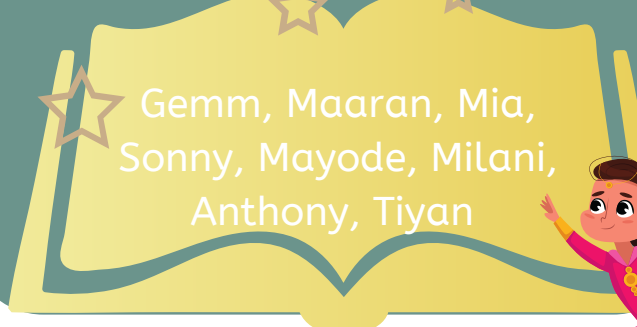
Everybody enjoyed Friendship Week and showing **KINDNESS** to each other, especially on Positive Noticing Day.



STAR OF THE WEEK

Charlie, Mila, Oliver, Lucy, Harvey, Emmanda, Marvelous, Wren

GOLDEN BOOK



Gemm, Maaran, Mia, Sonny, Mayode, Milani, Anthony, Tiyan



ATTENDANCE

W/c 11.11.2024

We strive for **96%+** attendance for all our children

Hundred Acre Wood
93%
Neverwood Forest
89%

Faraway Tree
93%
Baobab Tree
94%

Whole school, Year to date: **96%**



Please speak to us if we can help with any attendance matters. We are here to help.

KEY DATES



Assessment Week - Y1 will be completing Phonics Check assessments.

19th November - PC Ryan will be visiting to talk to the children about Stranger Danger - 'Clever Never Goes'

Class Photo's

4pm - Prospective parent tour



22nd November - Non School Uniform Day - Chocolate Tombola for Christmas Fair



SAFEGUARDING

Private Fostering

Do you understand what this term means?

Do you look after a child/young person that is under 16 years old that is not a close relative?
Are you a parent who has asked another adult to look after them, who is not a close relative?
Has this arrangement been put in place for more than 28 days?

If any of the above applies then the child/young person is being Privately Fostered.
If this applies to you or know someone this applies to then social services must be notified -
Bexley Multi-Agency Safeguarding Hub (MASH)
020 3045 5440

COMMUNITY

Don't
Forget!

Thank you to everyone that contributed to our Afternoon Cake Sale through donations of cake and funds.

Macmillan Coffee Morning 2024

This certificate is presented to
Macmillan Supporters
& friends

For your kind contribution of
£161.97

To help support those affected by cancer. Thank you.

Celine

Celine & the Coffee Morning Team

1 November 2024

SCHOOL
FUNDRAISING

More clothes -
more funds for
your organisation.
1 kg = £0.55

YOUR COLLECTION IS
ARRANGED ON:

10th January

FILL ANY BAGS WITH CLOTHING AND
BRING THEM TO SCHOOL/ORGANISATION
WE WILL COLLECT AND WEIGH THEM

WE ACCEPT

- Good quality clean clothing (adult's, children's, baby)
- Shoes (paired)
- Bags
- Hats & scarves
- Belts
- Fashion accessories
- Swimwear, lingerie
- Jewellery
- Perfumes

WE DON'T ACCEPT

- Uniforms
- Dirty, wet, ripped, damaged clothing
- Traditional clothing
- Duvets & pillows
- Single shoes
- Toys, stationery
- Bric-a-brac & electrical items
- Books, CDs, DVDs
- Workwear
- Carpets, rugs, mats, curtains
- Hygiene items, diapers
- Linen & towels

PLEASE NO UNIFORMS & DUVETS!

RAISE MONEY FOR YOUR SCHOOL BY GIVING
AWAY YOUR UNWANTED CLOTHES

ello@thelittlerecyclers.co.uk • 07476 406699 • thelittlerecyclers.co.uk

Having a winter clear out? You can bring any donations to LWP now and we will store until collection in January.



We have raised over £100 - can you help us to raise more?



TEAMWORK



CURIOSITY



RESPECT



PRIDE



KINDNESS



COMMUNITY



WE ARE RECRUITING CHAIR OF OUR LOCAL ACADEMY COMMITTEE

Lime Wood Primary School currently has a vacancy on their Local Academy Committee for a Chair.

We are looking for a committee member who would further enjoy being part of our school in joining our local governance team, sharing your experiences for the benefit of all of our community. Being a LAC Chair is a key role in the leadership and management of our school.

In return you would receive:

- An opportunity to influence the school experience and lives of children in the school community.
- A space to share your skills and experience to improve our educational offer.
- A chance to gain deeper insight into the leadership of a school.

If you believe you would enjoy being a governor or want to find out more, please get in touch with us! We would love to hear from you.



lwpooffice@watschools.org.uk

Please note that in accordance with our safeguarding policy, all successful applications will be subject to DBS and reference checks.



Lime Wood Primary School

Proud to be part of



Woodland
Academy Trust



TEAMWORK



CURIOSITY



RESPECT



PRIDE



KINDNESS



PTFA



If you would like to host a stall at one of these events, contact the PTFA directly!
ptfalwp@gmail.com

Christmas Fair
7th December 2024
 11am-2pm
 Refreshments
 Christmas Crafts & Stalls
 Meet Santa Claus
 Come & Join Us

Save the date

Easter Event
2nd April 2025

Summer Festival
28th June 2025



Don't miss out...Keep up to date with all our latest news!



@LimeWoodWAT



lime_wood_primary



Lime Wood Primary School



Follow us



TEAMWORK



CURIOSITY



RESPECT



PRIDE



KINDNESS